

Fuel Cell Systems

LG22T2 and LG45T2

Fuel cell powered battery charger for outdoor applications

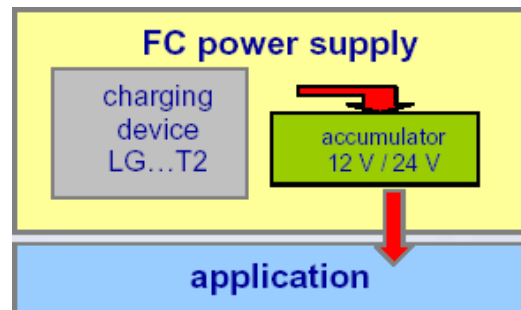
The LG22T2 and LG45T2 are a compact size battery charger with a nominal output power of 20 and 40 Watt. They are designed to charge lead acid batteries in remote applications such as measuring drinking water quality in lakes or reservoirs. The systems emit only water and warm air and can be integrated with solar battery systems to increase the availability of the system.



LG22/45T2(12/24V Version)

Features:

- Maintenance-free automatic charging set for 12V/24V lead accumulators
- Enhanced operating temperature ranging from -25°C to 50°C
- Water cooled fuel cell stack
- 12/24 V selection via software
- Monitoring and configuration software
- Adjustable charging current for different battery capacities
- Power generation using PEM Fuel Cell with pure Hydrogen supplied in compressed gas cylinders or Metal Hydride Storage Tanks
- Datalogging capability
- USB communication interface
- No pollutant emission



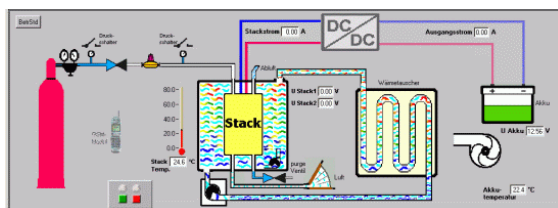
Functional diagram

LG22T2/LG45T2 includes:

- Battery connector
- Quick Coupling to connect Hydrogen source
- PC-Software for monitoring and configuration (PC based)
- Operating Manual

Options

- Remote control via GSM available optional



Monitoring and Configuration Software

Technical Specifications:

Output Power	20W (LG22T2) 40W (LG45T2)
Charging voltage	10.5V – 14.7V/ 21V – 29.4V selectable
Fuel	Hydrogen (quality 3.0 or higher).
Communication IF	USB
Operating temperature range	-25 ... 50°C
Dimensions	370x330x225mm 400x400x400mm (wall mount cabinet)
Weight	app. 9.5kg (wall mount cabinet) 18.5kg

Order Code

Order Code	Part#
LG22T2	LG22T2-01
LG22T2(wall cab.)	LG22T1-WG
LG45T2	LG45T2-01
LG45T2(wall cab.)	LG45T2-WG

Specifications may change without prior notice